



Civil & Environmental Consultants, Inc.

COLUMBUS

OUR STORY

CEC's Columbus office was established in 1997 with waste, civil, and environmental practices. Ecological services were added in 2004. It has grown into a full-service office providing services to each market with diversity across the professional disciplines. With more than 65 professionals, CEC Columbus now has civil engineers, surveyors, biologists, geologists, and environmental scientists. Our main revenue sources currently include real estate development, natural gas development, and aggregate mining permitting and development.

OUR CULTURE

We are a fast-paced but laid-back office that reflects CEC leadership. It's a very supportive environment, which fosters the success of our employees. You'll be a part of a growing office where we value hard work and dedication. We encourage collaboration and teamwork, and we have great opportunities to allow young professionals to grow.

Our office works hard, but we play hard, too! Activities include monthly happy hours at local brew pubs; an annual picnic at Huntington Park, home of the Columbus Clippers minor league baseball team; an annual holiday party; soup-a-thons; chili cook-offs; and a seasonal beer exchange (which has become quite popular). In addition, we have a volleyball team and several of us are in a golf league.

GIVING BACK

Giving back is important to CEC Columbus. Our employees participate in various community organizations and activities, such as charity runs for the Ronald McDonald House, the Bowl for Kids' Sake event for Big Brothers Big Sisters, stream cleanups, and Habitat for Humanity events.



NOTABLE PROJECTS

Kamenik T Well Pad | Perrysville, OH

CEC's well pad site design process began with site visits, environmental assessments, and surface mapping methods, including UAV LiDAR mapping. The project also included subsurface and geotechnical investigations, vehicle analysis, and Full Depth Reclamation. CEC stockpiled large stones as a screening area for the site conducive to wildlife habitats, drainage, and stormwater runoff.

Southern School of Energy and Sustainability | Durham County, NC

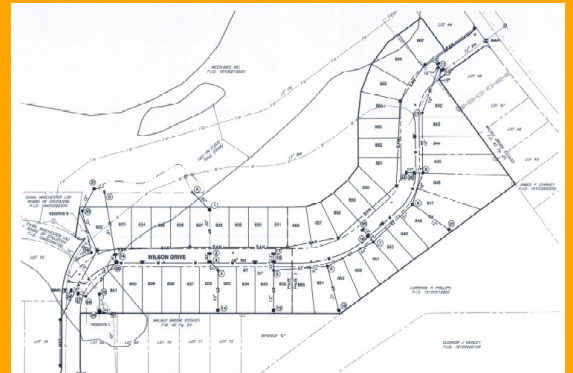
CEC provided ecological and stormwater planning, assessment, design, permitting, and outreach services, including grant writing. CEC prepared design drawings for the stream construction with a CEC custom stream design application using AutoCAD® Civil 3D® software. Phased efforts consisted of installing 1,000 linear feet of stream restoration, two wet detention reuse basins, two stormwater treatment wetlands, and two bioretention rain gardens.

Villages at Westchester | Canal Winchester, OH

CEC is completing the final development plans, construction plans, and final plats for the remaining phases of a single-family residential development. There was a high-water table on-site, so CEC analyzed what grades to set the site. CEC controlled the amount of runoff entering the golf course property through multiple storm sewer networks and several retention basins placed to limit downstream flooding.

Contiguous Vertical Expansion Permit Application | Jackson Township, OH

CEC's design for the Franklin County Sanitary Landfill increased the disposal area 55 acres and increased the airspace 45 million cubic yards, adding 30 years to the landfill's life. CEC also worked with the Ohio EPA to characterize the glacial deposits beneath the expansion area, calculate vertical and horizontal groundwater travel velocities to the high-yield aquifer and public water supply wells, and develop an approvable groundwater monitoring network. CEC also designed an innovative method to expand the leachate collection sumps.



CEC | COLUMBUS

8800 Lyra Drive, Suite 300

Columbus, OH 43240 | 614-540-6633

www.cecinc.com