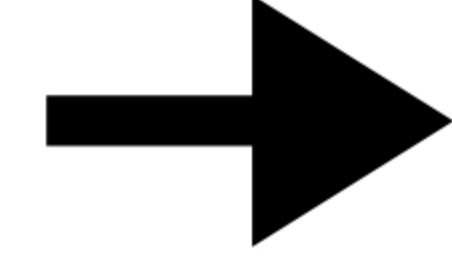
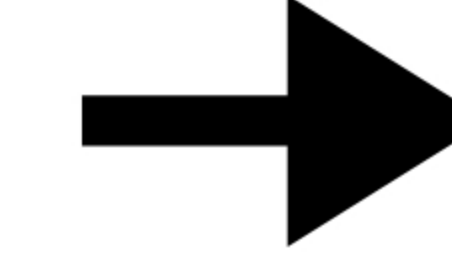
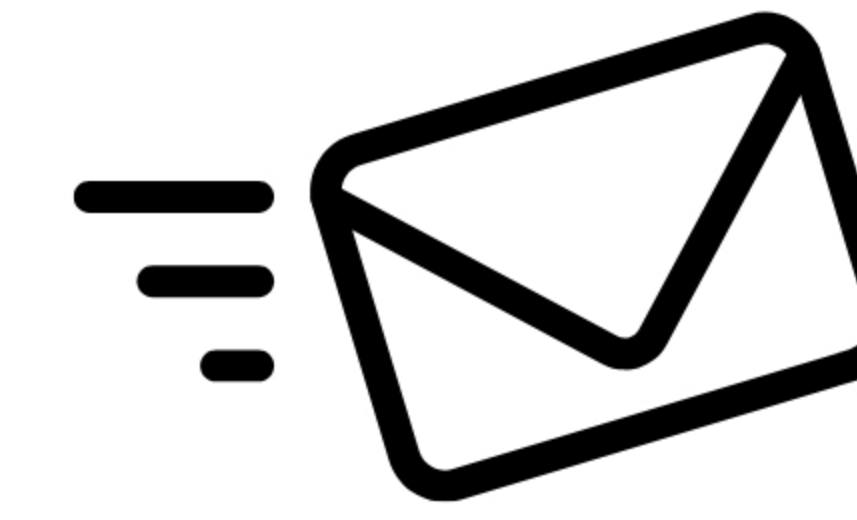
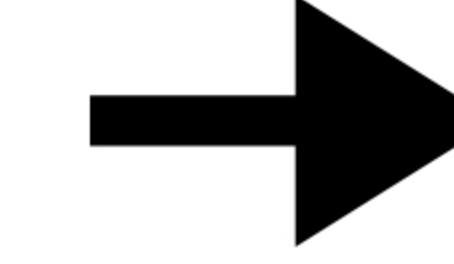
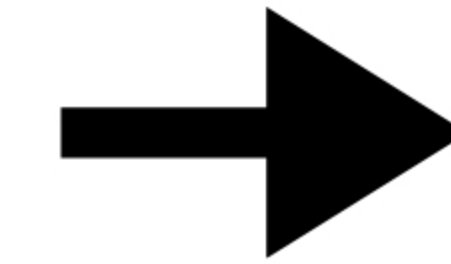
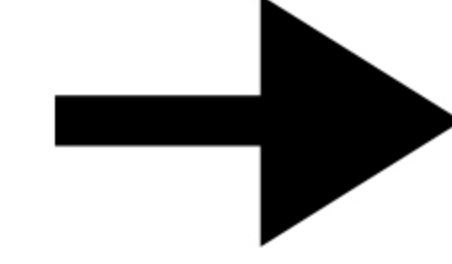


Pursuing an After-the-Fact Permit using Atypical Wetland Delineation Methodology

Author: Hannah Comune



CEC
Civil & Environmental
Consultants, Inc.



Problem

- Notice of Violation (NOV) was issued by the Ohio EPA
- Potential wetlands were filled and stormwater controls were absent

Field Delineation

- Examined aerial imagery for existing and historical site conditions
- Collected sample point data in transects
- Documented current conditions of disturbed and undisturbed areas

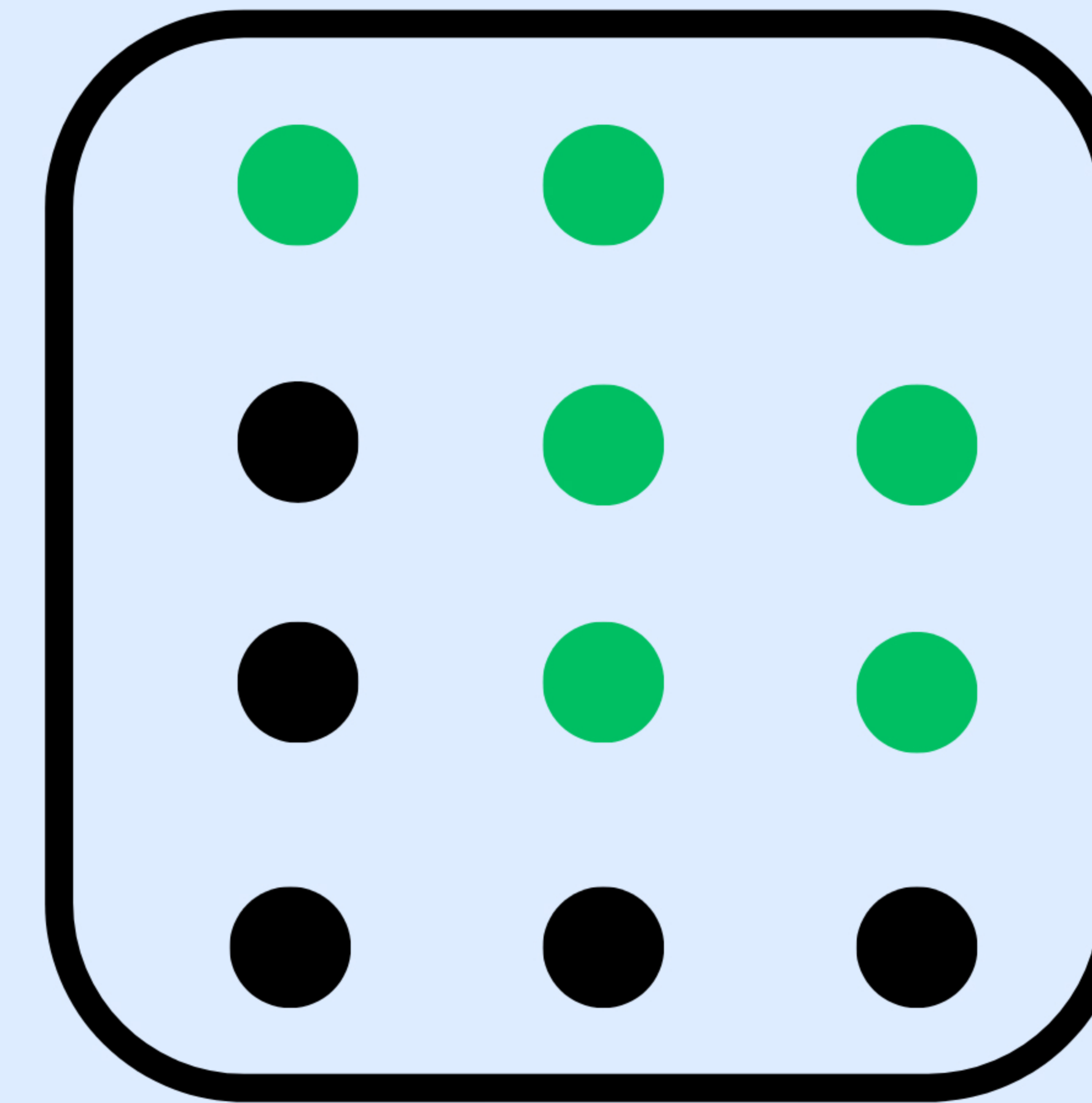


Sample Point 1
Representative of existing undisturbed wetland on-site



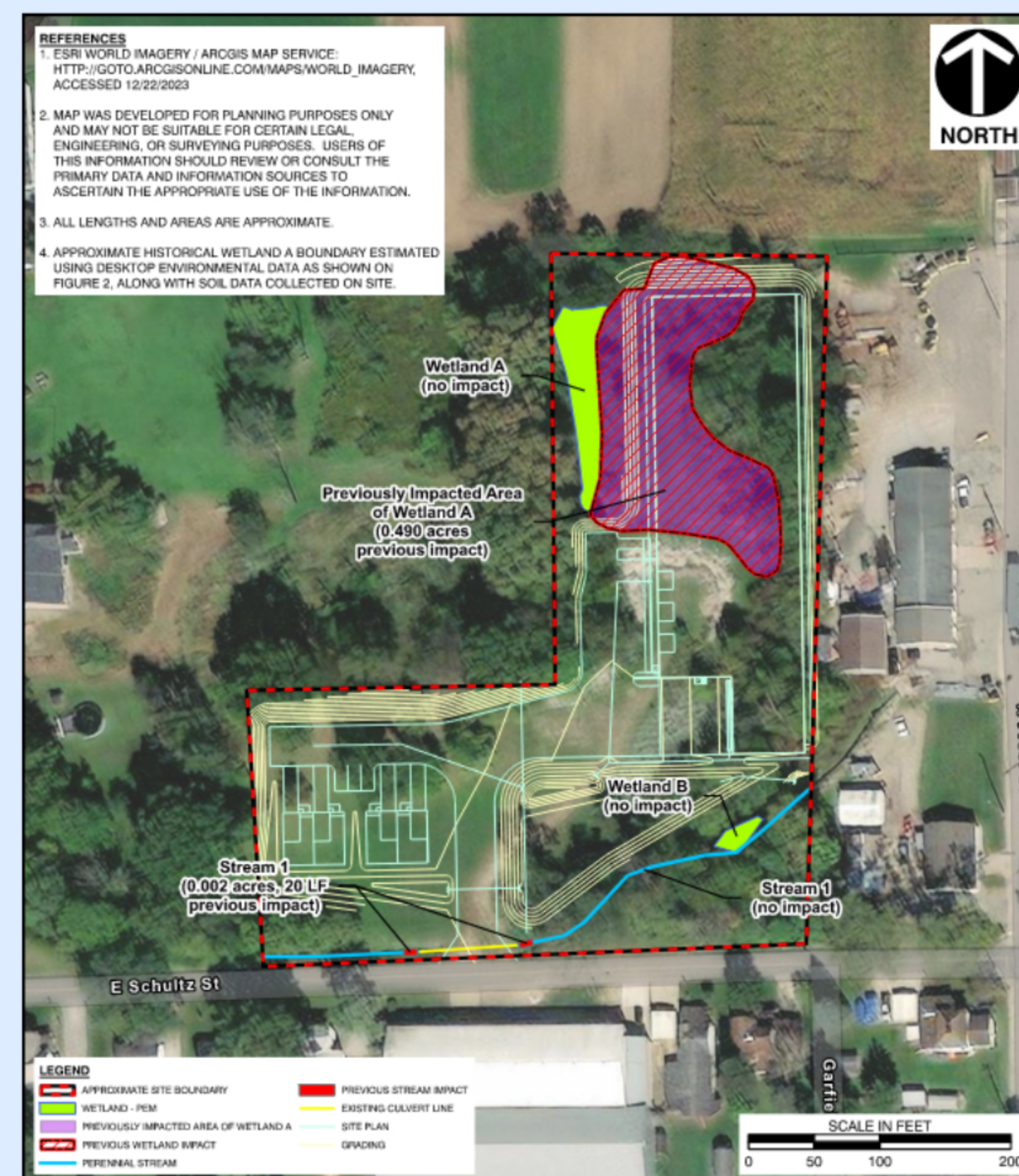
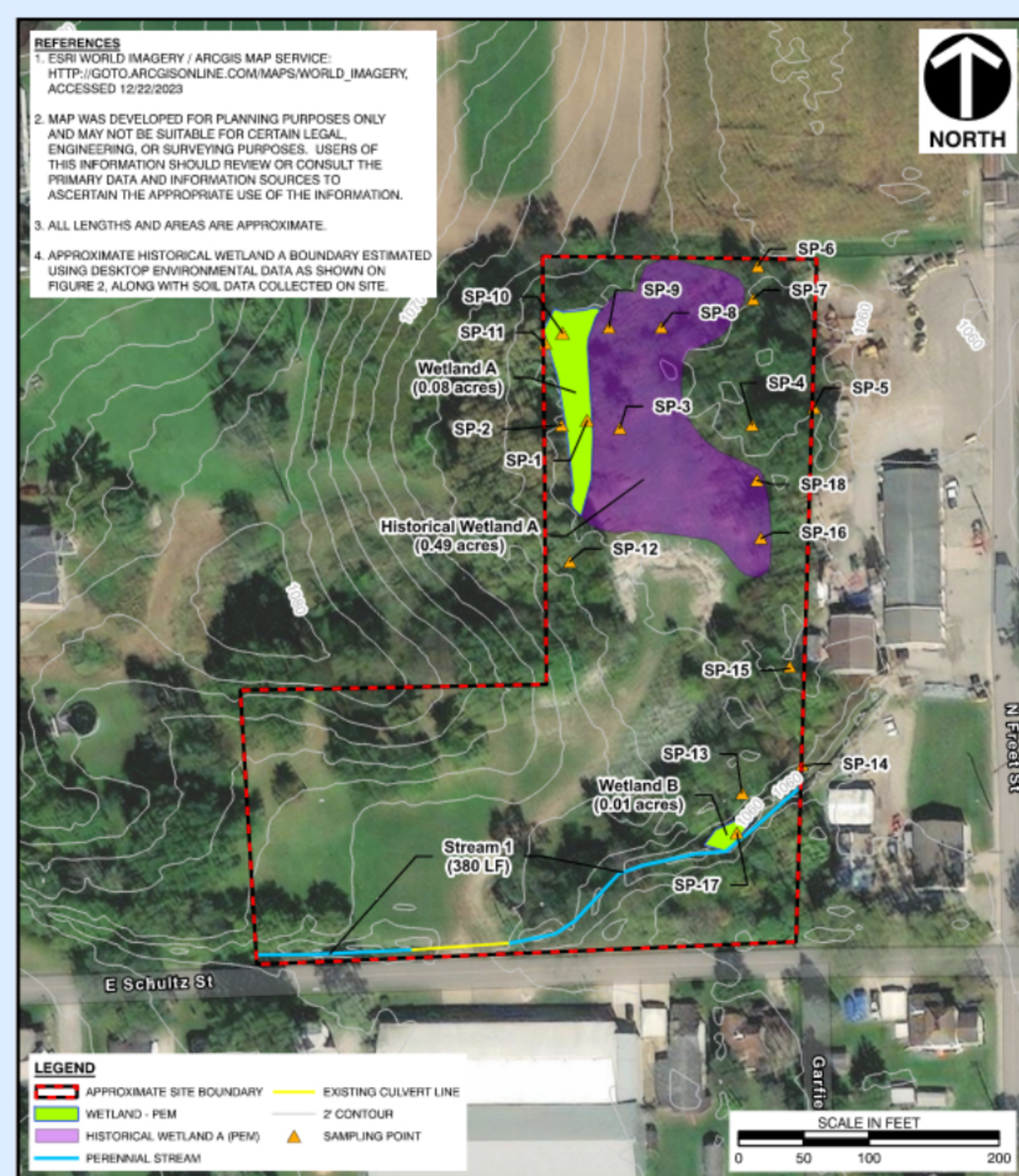
Sample Point 18
Representative of disturbed wetland area on-site

Data Review



- Reviewed sample point data to determine the disturbed wetland boundary
- Sample points with hydric soil indicators were determined to be wetland
- Sample points with no hydric soil indicators were determined to be upland

Results



Successes & Challenges

- Approximately three feet of fill material was placed on-site ❌
- Historical aerials were limiting ❌
- Army Corps of Engineers accepted the methodology used ✅
- 0.8 wetland mitigation credits were purchased ✅

More Information

Difficult Wetland Situations in the Northcentral and Northeast Region



Contact Information
hcomune@cecinc.com
(614) -307-6016

